

# PARAGON

## PERFORMANCE

SINCE 1997

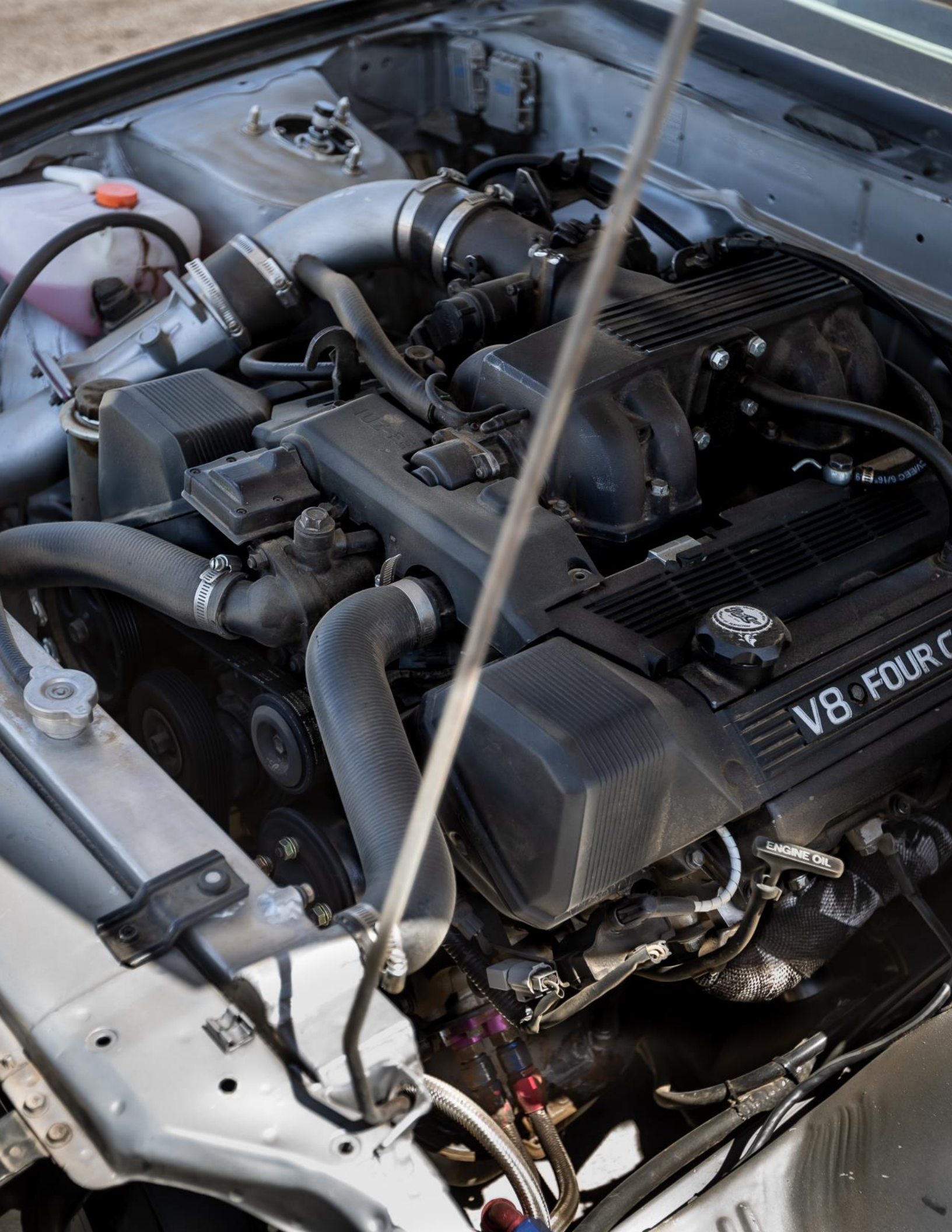
# PERFORMANCE CATALOG

*ALUMINUM/STAINLESS-STEEL / FJIC-MNPT*

*PTFE SS BRAIDED HOSE*

Rev. 1 2022





# *Terms & Conditions*

## **Payment Options & Information.**

Paragon Performance accepts American Express, Discovery, Mastercard, PayPal, & Visa for credit card transactions. If you wish to pay with check, it requires the process for approval for Net 30 terms or the check is to be sent ahead of time. Orders are not charged immediately, they are charged the same day they are shipping. If/when paying with PayPal, it is required a payment is sent before the order proceeds into production - shipping is estimated before you are sent the amount to pay.

## **Shipping Information**

Paragon Performance ships across the US & Canada. We can ship via UPS, FEDEX, & USPS - it is recommended to ship via USPS to Canada. Bigger orders that do not fit in a padded envelope will have to be calculated and added to your total. Shipping and transaction details are emailed the following business day.



## **Freight Damage**

Products that are delivered damaged or lost in transit are the responsibility of the carrier.

## **Parts Availability**

All hose assemblies produced by Paragon are made to order. Assemblies/kits are usually produced withing 7-9 business days if parts are in stock. We do our best to keep parts to produce assemblies in stock, however demand peaks and freight backups may cause production & delivery delays.

## **Back-Orders**

Back-orders are immediately shipped out as soon as we receive/produce the remainder of the order. Please notify us if you would like a confirmation on the back-order shipping before-hand.

## **Paragon Performance Limited Warranty**

Paragon Performance warrants that said products will be free from defects in material and workmanship for 90 days from date of original purchase, and this warranty is limited to repair or replacement of parts. This warranty shall not exceed the original purchase price of the goods, nor shall Paragon Performance be responsible for special, incidental or consequential damages. This warranty does not apply to any product subject to damage in transit, accident, misuse or abuse following date of original purchase. This warranty shall not apply to any product which has been repaired or altered in any manner following date of original purchase. Paragon Performance parts are not to be used for any aircraft applications, experimental or otherwise. Paragon Performance stainless steel braided hose assemblies for brake line use are designed for off-road use only.

## **Returns/Cancellations**

For all stock items, Paragon Performance will accept product returns for a full refund as long as the item(s) are in their original condition/ packaging. Returns on any custom order will not be accepted, so we recommend that you order the correct assembly configurations for the lines you require.

## **Printing Errors**

As much as we proof read text and documents before publishing, we do not accept responsibility for any typographical mistake whether in pricing or content. All pricing is subject to change, by placing an order with Paragon Performance you are agreeing to these terms and conditions.



# **Table of Contents**

<b>PTFE Fittings</b> .....	<b>5-11</b>
<b>Hose Assembly Examples</b> .....	<b>12</b>
<b>Mix &amp; Match</b> .....	<b>13</b>
<b>Detailed Parts (FJIC)</b> .....	<b>14</b>
<b>AN Inserts</b> .....	<b>14</b>
<b>AN Nuts</b> .....	<b>15</b>
<b>Collars/Ferrules</b> .....	<b>16</b>
<b>Adapters</b> .....	<b>17-18</b>
<b>Banjo Adapters</b> .....	<b>19</b>
<b>Y-Adapters</b> .....	<b>20</b>
<b>Metric Adapters</b> .....	<b>21</b>
<b>Carbon Steel, Banjo Fittings</b> .....	<b>22</b>
<b>Carbon Steel, Metric Fittings</b> .....	<b>23</b>
<b>Carbon Steel, Imperial Male Fittings</b> .....	<b>24</b>
<b>Carbon Steel, Imperial Female Fittings</b> .....	<b>25</b>
<b>Brake Fittings Index</b> .....	<b>26-27</b>
<b>Brake Adapters</b> .....	<b>28-29</b>
<b>Rubber Grommets</b> .....	<b>30</b>
<b>PTFE Stainless Braided Hose</b>	
<b>Non-Conductive</b> .....	<b>31</b>
<b>With Silicone Jacket</b> .....	<b>32</b>
<b>With PVC Jacket</b> .....	<b>32</b>
<b>With Hytrel Jacket</b> .....	<b>33</b>
<b>With Santoprene Jacket</b> .....	<b>33</b>
<b>Conductive</b> .....	<b>34</b>
<b>Silicon Vacuum Hose</b> .....	<b>35</b>
<b>Fire Sleeve</b> .....	<b>36</b>
<b>Silicone Heater hose</b> .....	<b>37</b>
<b>Audi Performance</b> .....	<b>38</b>

# *PTFE FITTINGS*



# STAINLESS-STEEL

## Female JIC Swivel (2pc)

Includes 303 Stainless Nut / Insert & Crimp/Swage Collar Stainless Steel. Has a back-up hex and works with all .030 & .040 wall stainless braided smooth bore PTFE hose.

P/N	Description
SSFJ-603-03	-03 Female JIC, 3/8-24 thread
SSFJ-604-04	-04 Female JIC, 7/16-20 thread
SSFJ-605-05	-05 Female JIC, 1/2-20 thread
SSFJ-606-06	-06 Female JIC, 9/16-18 thread
SSFJ-608-08	-08 Female JIC, 3/4-16 thread
SSFJ-610-10	-10 Female JIC, 7/8-14 thread
SSFJ-612-12	-12 Female JIC, 1 1/16-12 thread
SSFJ-616-16	-16 Female JIC, 1 5/16-12 thread



## National Pipe Thread

Includes Pipe Insert & Crimp/Swage Collar 303 Stainless Steel. Works with all .030 & .040 wall stainless braided PTFE hose.

P/N	Description
SSPB-04-102	-04 barb by 1/8" Male NPT
SSPB-04-104	-04 barb by 1/4" Male NPT
SSPB-05-104	-05 barb by 1/4" Male NPT
SSPB-06-104	-06 barb by 1/4" Male NPT
SSPB-06-106	-06 barb by 3/8" Male NPT
SSPB-08-106	-08 barb by 3/8" Male NPT
SSPB-08-108	-08 barb by 1/2" Male NPT
SSPB-10-108	-10 barb by 1/2" Male NPT
SSPB-12-112	-12 barb by 3/4" Male NPT
SSPB-16-116	-16 barb by 1" Male NPT





## Female JIC Swivel (3pc)

**Include Nut, Insert & Crimp/Swage Collar 304 Stainless Steel**

**Works with all .030 wall stainless braided PTFE hose.**

P/N	Description	Crimp Spec
PP-100203	-03 Female JIC, 3/8-24 thread	.300-.305
PP-100204	-04 Female JIC, 7/16-20 thread	.350-.355
PP-100205	-05 Female JIC, 1/2-20 thread	.404-.409
PP-100206	-06 Female JIC, 9/16-18 thread	.478-.482
PP-100208	-08 Female JIC, 3/4-16 thread	.568-.573
PP-100210	-10 Female JIC, 7/8-14 thread	.673-.678
PP-100212	-12 Female JIC, 1 1/16-12 thread	.800-.805
PP-100216	-16 Female JIC, 1 5/16-12 thread	1.044-1.049



## National Pipe Fittings

**Includes Insert & Crimp/Swage Collar**

**Works with all .030 wall stainless braided PTFE hose.**

P/N	Description
PP-100003	1/8" Male Pipe by -03 barb, Insert & Collar
PP-100104	1/8" Male Pipe by -04 barb, Insert & Collar
PP-100004	1/4" Male Pipe by -04 barb, Insert & Collar
PP-100005	1/4" Male Pipe by -05 barb, Insert & Collar
PP-100405	1/4" Female Pipe by -05 barb, Insert & Collar
PP-100106	1/4" Male Pipe by -06 barb, Insert & Collar
PP-100006	3/8" Male Pipe by -06 barb, Insert & Collar
PP-100706	1/8" Male Pipe by -06 barb, Insert & Collar
PP-100108	3/8" Male Pipe by -08 barb, Insert & Collar
PP-100008	1/2" Male Pipe by -08 barb, Insert & Collar
PP-100010	1/2" Male Pipe by -10 barb, Insert & Collar
PP-100012	3/4" Male Pipe by -12 barb, Insert & Collar
PP-100016	1" Male Pipe by -16 barb, Insert & Collar



## Female JIC 90° Swivel

Female JIC 90° Stainless Steel Crimp/Swage Collar Works with all .030 wall stainless braided PTFE hose.



P/N	Description
PP-100903	-03 Female JIC 90° barb, Insert & Collar
PP-100904	-04 Female JIC 90° barb, Insert & Collar
PP-100906	-06 Female JIC 90° barb, Insert & Collar

# CARBON-STEEL

## Female JIC Swivel (2pc)

Includes Carbon Steel Plated Nut / Insert & Crimp/Swage. Has a back-up hex and works with all .030 & .040 wall stainless braided smooth bore PTFE hose.



P/N	Description
CSFJ-604-04	-04 Female JIC, 7/16-20 thread
CSFJ-605-05	-05 Female JIC, 1/2-20 thread
CSFJ-606-06	-06 Female JIC, 9/16-18 thread
CSFJ-608-08	-08 Female JIC, 3/4-16 thread
CSFJ-610-10	-10 Female JIC, 7/8-14 thread
CSFJ-612-12	-12 Female JIC, 1 1/16-12 thread
CSFJ-616-16	-16 Female JIC, 1 5/16-12 thread





## National Pipe Thread

Includes Pipe Insert & Crimp/Swage Collar  
Carbon Steel. Works with all .030 & .040  
wall stainless braided PTFE hose.



P/N	Description
CSPB-04-102	-04 barb by 1/8" Male NPT
CSPB-04-104	-04 barb by 1/4" Male NPT
CSPB-05-102	-05 barb by 1/8" Male NPT
CSPB-05-104	-05 barb by 1/4" Male NPT
CSPB-06-104	-06 barb by 1/4" Male NPT
CSPB-06-106	-06 barb by 3/8" Male NPT
CSPB-08-106	-08 barb by 3/8" Male NPT
CSPB-08-108	-08 barb by 1/2" Male NPT
CSPB-10-108	-10 barb by 1/2" Male NPT
CSPB-12-112	-12 barb by 3/4" Male NPT



## Female JIC Swivel (3pc)

Include Nut, Insert & Crimp/Swage Collar Carbon Steel  
Works with all .030 wall stainless braided PTFE hose.

P/N	Description	Crimp Spec	
PP-120203	-03 Female JIC, 3/8-24 thread	.300-.305	
PP-120204	-04 Female JIC, 7/16-20 thread	.350-.355	
PP-120206	-06 Female JIC, 9/16-18 thread	.478-.482	
PP-120208	-08 Female JIC, 3/4-16 thread	.568-.573	*SPECIAL ORDER*



**Ships From Our  
California  
Warehouse**

## Female JIC 90° Swivel

Female JIC 90° carbon Steel Crimp/Swage Collar Works with all .030 wall stainless braided PTFE hose.



P/N	Description
PP-120903	-03 Female JIC 90° barb, Insert & Collar
PP-120904	-04 Female JIC 90° barb, Insert & Collar
PP-120906	-06 Female JIC 90° barb, Insert & Collar

# ALUMINUM

## Female JIC Swivel (2pc)

Includes Aluminum Nut/Insert & Crimp/Swage Collar  
Works with all .030 wall stainless braided PTFE hose.



P/N	Description
PP-818-00-04DBK	-04 Female JIC, 3/8-24 thread
PP-818-00-06DBK	-06 Female JIC, 7/16-20 thread
PP-818-00-08DBK	-08 Female JIC, 9/16-18 thread
PP-818-00-10DBK	-10 Female JIC, 3/4-16 thread

## Female JIC 45° Swivel

Female JIC 45° Aluminum Crimp/Swage Collar Works with  
all .030 wall stainless braided PTFE hose.



P/N	Description
PP-818-45-04	-04 Female JIC 45° barb, Insert & Collar
PP-818-45-06	-06 Female JIC 45° barb, Insert & Collar
PP-818-45-08	-08 Female JIC 45° barb, Insert & Collar
PP-818-45-10	-10 Female JIC 45° barb, Insert & Collar

# Female JIC 90° Swivel

Female JIC 90° Aluminum Crimp/Swage Collar Works with  
all .030 wall stainless braided PTFE hose.



P/N	Description
PP-818-90-04DBK	-04 Female JIC 90° barb, Insert & Collar
PP-818-90-06DBK	-06 Female JIC 90° barb, Insert & Collar
PP-818-90-08DBK	-08 Female JIC 90° barb, Insert & Collar
PP-818-90-10DBK	-10 Female JIC 90° barb, Insert & Collar



 **NEXTDAY**  
DELIVERY  
To SoCal &  
Las Vegas via  
**FedEx**®



***CHECK IT OUT !!***

***SAVE TIME & have US make your assemblies for you!***



***BMW 740i  
4 line DOT Brake kit***



***Yamaha XS75  
4 line DOT Brake kit***

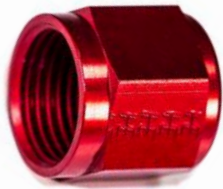


***Audi Q4000  
Clutch line***



***Chevy K25  
3 line DOT Brake kit***

# ***MIX & MATCH***



***Aluminum Nut***



***Carbon Steel Insert***



***Stainless Steel Collar***



***Carbon Steel Nut***



***Stainless Steel Insert***



***Carbon Steel Collar***



***Stainless Steel Nut***



***Carbon Steel Insert***



***Stainless Steel Collar***



# ***DETAILED PARTS (FJIC)***

## ***AN INSERTS***

### **Stainless-Steel**

Includes insert

Works with all .030 wall stainless braided PTFE hose.

P/N	Description
PP-200203	-03 Insert 37° (.040 Wall)
PP-200204	-04 Insert 37° / 45° Dual Flare
PP-200205	-05 Insert 37° / 45° Dual Flare
PP-200206	-06 Insert 37° / 45° Dual Flare
PP-200208	-08 Insert 37° / 45° Dual Flare
PP-200210	-10 Insert 37° / 45° Dual Flare
PP-200212	-12 Insert 37° / 45° Dual Flare
PP-200216	-16 Insert 37° / 45° Dual Flare



### **Carbon-Steel**

Includes insert

Works with all .030 wall stainless braided PTFE hose.

P/N	Description
PP-220203	-03 Insert 37° (.040 Wall)
PP-220204	-04 Insert 37° / 45° Dual Flare
PP-220206	-06 Insert 37° / 45° Dual Flare
PP-220208	-08 Insert 37° / 45° Dual Flare





# AN NUTS

## Stainless-Steel

Includes Nut

Works with all .030 wall stainless braided PTFE hose.



P/N	Description
PP-300203	-03 Female JIC, 3/8-24 thread
PP-300204	-04 Female JIC, 7/16-20 thread
PP-300205	-05 Female JIC, 1/2-20 thread
PP-300206	-06 Female JIC, 9/16-18 thread
PP-300306	-06 SAE Nut, 5/8-18 thread
PP-300208	-08 Female JIC, 3/4-16 thread
PP-300210	-10 Female JIC, 7/8-14 thread
PP-300212	-12 Female JIC, 1 1/16-12 thread
PP-300312	-12 SAE Nut, 1-1/16-14 thread
PP-300216	-16 Female JIC, 1 5/16-12 thread

## Carbon-Steel

Includes Nut

Works with all .030 wall stainless braided PTFE hose.



P/N	Description
PP-818-03S	-03 Female JIC, 3/8-24 thread
PP-818-04S	-04 Female JIC, 7/16-20 thread
PP-818-06S	-06 Female JIC, 9/16-18 thread
PP-818-08S	-08 Female JIC, 3/4-16 thread

## Aluminum

Includes Nut

Works with all .030 wall stainless braided PTFE hose.



Blue Aluminum



Black Aluminum

P/N	Description
PP-818-03DBK	-03 Female JIC, 3/8-24 thread, Black
PP-818-03D	-03 Female JIC, 3/8-24 thread, Blue
PP-818-03DR	-03 Female JIC, 3/8-24 thread, Red
PP-818-04DBK	-04 Female JIC, 7/16-20 thread, Black
PP-818-04D	-04 Female JIC, 7/16-20 thread, Blue
PP-818-04DR	-04 Female JIC, 7/16-20 thread, Red
PP-818-06DBK	-06 Female JIC, 9/16-18 thread, Black
PP-818-06D	-06 Female JIC, 9/16-18 thread, Blue
PP-818-06DR	-06 Female JIC, 9/16-18 thread, Red
PP-818-08DBK	-08 Female JIC, 3/4-16 thread, Black
PP-818-08D	-08 Female JIC, 3/4-16 thread, Blue
PP-818-08DR	-08 Female JIC, 3/4-16 thread, Red
PP-818-10D	-10 Female JIC, 7/8-14 thread, Blue
PP-818-12D	-12 Female JIC, 1 1/16-12 thread, Blue

# CRIMP COLLARS / FERRULES

## Stainless-Steel

Include Crimp/Swage Collar

Works with all .030 wall stainless braided PTFE hose.



P/N	Description	Crimp Spec
PP-400003	-03 Crimp Collar	.300-.305
PP-400004	-04 Crimp Collar	.350-.355
PP-400005	-05 Crimp Collar	.404-.409
PP-400006	-06 Crimp Collar	.478-.482
PP-400008	-08 Crimp Collar	.568-.573
PP-400010	-10 Crimp Collar	.673-.678
PP-400012	-12 Crimp Collar	.800-.805
PP-400016	-16 Crimp Collar	1.044-1.049

## Carbon-Steel

Include Crimp/Swage Collar

Works with all .030 wall stainless braided PTFE hose.



P/N	Description	Crimp Spec
PP-420003	-03 Crimp Collar	.300-.305
PP-420004	-04 Crimp Collar	.350-.355
PP-420006	-06 Crimp Collar	.478-.482
PP-420008	-08 Crimp Collar	.568-.573

# ADAPTERS



## JIC Union Adapters

Male JIC Union straight adapter, Stainless Steel

P/N	Description
PP-SS-2403-03-03	-03 Male JIC by -03 Male JIC
PP-SS-2403-04-04	-04 Male JIC by -04 Male JIC
PP-SS-2403-06-04	-06 Male JIC, by -04 Male JIC
PP-SS-2403-06-06	-06 Male JIC, by -06 Male JIC
PP-SS-2403-08-08	-08 Male JIC, by -08 Male JIC
PP-SS-2403-10-08	-10 Male JIC, by -08 Male JIC
PP-SS-2403-10-10	-10 Male JIC, by -10 Male JIC
PP-SS-2403-12-12	-12 Male JIC by -12 Male JIC



## JIC Union Adapters

Male JIC Union straight adapter, Carbon Steel

P/N	Description
PP-S-2403-03	-03 Male JIC by -03 Male JIC
PP-S-2403-04-03	-04 Male JIC by -03 Male JIC
PP-S-2403-04	-04 Male JIC by -04 Male JIC
PP-S-2403-05-04	-05 Male JIC, by -04 Male JIC
PP-S-2403-05	-05 Male JIC, by -05 Male JIC
PP-S-2403-06-04	-06 Male JIC, by -04 Male JIC
PP-S-2403-06-05	-06 Male JIC, by -05 Male JIC
PP-S-2403-06	-06 Male JIC, by -06 Male JIC
PP-S-2403-08-06	-08 Male JIC by -06 Male JIC
PP-S-2403-08	-08 Male JIC by -08 Male JIC
PP-S-2403-10-08	-10 Male JIC by -08 Male JIC
PP-S-2403-10	-10 Male JIC by -10 Male JIC
PP-S-2403-12	-12 Male JIC by -12 Male JIC

## (815) JIC Union Adapters

Male JIC Union straight adapter, Aluminum

P/N	Description
PP-815-03DBK	-03 Male JIC by -03 Male JIC, Black
PP-815-03D	-03 Male JIC by -03 Male JIC, Blue
PP-815-04DBK	-04 Male JIC, by -04 Male JIC, Black
PP-815-04D	-04 Male JIC, by -04 Male JIC, Blue
PP-815-06DBK	-06 Male JIC, by -06 Male JIC, Black
PP-815-06D	-06 Male JIC, by -06 Male JIC, Black
PP-815-20-16DBK	-20 Male JIC, by -16 Male JIC, Black





## JIC to MNPT

Male JIC Union straight adapter, Stainless Steel

P/N	Description
PP-SS-2404-03-02	-03 Male JIC, by 1/8" MNPT
PP-SS-2404-04-02	-04 Male JIC, by 1/8" MNPT
PP-SS-2404-04-04	-04 Male JIC, by 1/4" MNPT
PP-SS-2404-04-06	-04 Male JIC, by 3/8" MNPT
PP-SS-2404-04-08	-04 Male JIC, by 1/2" MNPT
PP-SS-2404-06-04	-06 Male JIC, by 1/4" MNPT
PP-SS-2404-06-06	-06 Male JIC, by 3/8" MNPT
PP-SS-2404-10-08	-10 Male JIC, by 1/2" MNPT
PP-SS-2404-12-12	-12 Male JIC, by 3/4" MNPT



## JIC to MNPT

Male JIC Union straight adapter, Carbon Steel

P/N	Description
PP-S-2404-03-02	-03 Male JIC, by 1/8" MNPT
PP-S-2404-04-02	-04 Male JIC, by 1/8" MNPT
PP-S-2404-04-04	-04 Male JIC, by 1/4" MNPT
PP-S-2404-04-06	-04 Male JIC, by 3/8" MNPT
PP-S-2404-04-08	-04 Male JIC, by 1/2" MNPT
PP-S-2404-06-04	-06 Male JIC, by 1/4" MNPT
PP-S-2404-06-06	-06 Male JIC, by 3/8" MNPT
PP-S-2404-10-08	-10 Male JIC, by 1/2" MNPT
PP-S-2404-12-08	-12 Male JIC, by 1/2" MNPT
PP-S-2404-12-12	-12 Male JIC, by 3/4" MNPT



## (816) JIC to MNPT

Male JIC Union straight adapter, Aluminum

P/N	Description
PP-816-03D	-03 Male JIC, by 1/8" MNPT - Blue
PP-816-03DBK	-03 Male JIC, by 1/8" MNPT - Black
PP-816-04-04D	-04 Male JIC, by 1/4" MNPT - Blue
PP-816-04D	-04 Male JIC, by 1/8" MNPT - Blue
PP-816-06-02DBK	-06 Male JIC, by 1/8" MNPT - Black
PP-816-06-02D	-06 Male JIC, by 1/8" MNPT - Blue
PP-816-06-06D	-06 Male JIC by 3/8" MNPT - Blue
PP-816-06-06DBK	-06 Male JIC by 3/8" MNPT - Black
PP-816-06D	-06 Male JIC by 1/4" MNPT - Blue
PP-816-06DBK	-06 Male JIC by 1/4" MNPT - Black



# ***BANJO ADAPTERS***

**Male JIC to Banjo adapters great for applications when a quick adaptation to a fluid bolt is needed!**



P/N	Description
PP-776-03-M10	10 mm banjo adapter by -03 Male JIC (Large Ball)
PP-776-03-M1020D	10 mm banjo adapter by -03 Male JIC (20° bend)
PP-776-03-M1045BK	10 mm banjo adapter by -03 Male JIC (45° bend)
PP-776-03M1045R	10 mm banjo adapter by -03 Male JIC (45° bend)
PP-776-03-M10L	10 mm banjo adapter by -03 Male JIC (Long)
PP-776-03-M12	12 mm banjo adapter by -03 Male JIC
PP-776-03-71645ML	7/16" banjo adapter by -03 Male JIC (45° Medium Long)
PP-776-04-M10	10 mm banjo adapter by -04 Male JIC
PP-776-04-M12	12 mm banjo adapter by -04 Male JIC
PP-776-04-716	7/16" banjo adapter by -04 Male JIC
PP-776-06-M12	12 mm banjo adapter by -06 Male JIC
PP-776-06-M14	14 mm banjo adapter by -06 Male JIC
PP-776-06-M16	16 mm banjo adapter by -06 Male JIC
PP-776-KIT	Assortment Kit - Banjo Unions and Adapters

# ***Y-ADAPTERS***

**Male JIC X 3 great for situations where there are multiple feeds to a main source!**



P/N	Description
TWG-Y500-04-03DBK	-04 Male JIC Y Reducer by -03 MJIC / -03 MJIC adapter
TWG-Y500-04DBK	-04 Male JIC Y by -04 MJIC / -04 MJIC JIC adapter
TWG-Y500-06-04DBK	-06 Male JIC Y by -04 Male JIC / -04 Male JIC adapter
TWG-Y500-06DBK	-06 Male JIC Y by -06 MJIC / -06 MJIC JIC adapter
TWG-Y500-08-06DBK	-08 Male JIC / JIC Y by -06 Male JIC / -06 Male JIC adapter





# ***METRIC ADAPTERS***

**Male JIC to metric thread adapter**



P/N	Description
PP-S-7400-04-10	-04 Male JIC by 10 mm 1.0 male
PP-S-7400-04-12x1.0	-04 Male JIC by 12mm 1.0 male
PP-S-7400-04-12	-04 Male JIC by 12mm 1.5 male
PP-S-7400-04-14	-04 Male JIC, by 14mm 1.5 male
PP-S-7400-06-12x1.25	-06 Male JIC, by 12mm 1.25 male
PP-S-7400-06-12x1.5	-06 Male JIC, by 12mm 1.5 male
PP-S-7400-06-14	-06 Male JIC, by 14mm 1.5 male
PP-S-7400-06-16	-06 Male JIC, by 16mm 1.5 male
PP-S-7400-06-18	-06 Male JIC by 18mm 1.5 male
PP-S-7400-08-18	-08 Male JIC by 18mm 1.5 male
PP-S-7400-10-16	-10 Male JIC by 16mm 1.5 male



# BANJO FITTINGS



## BF-B00-10-03B

Banjo Straight 10mm (1-5/8\"/>

For -03 PTFE Smoothbore  
Hose



## BF-B00-10-03C

Banjo Straight 10mm (2-1/2\"/>

For -03 PTFE Smoothbore  
Hose



## BF-B20-10-03

Banjo 20° Bend 10mm, Car-  
bon Steel

For -03 PTFE Smoothbore  
Hose



## BF-B45-10-03

Banjo 45° 10mm, Carbon Steel

For -03 PTFE Smoothbore  
Hose



## BF-B70-10-03

Banjo 70° Bend 10mm, Car-  
bon Steel

For -03 PTFE Smoothbore  
Hose



## BF-B90-10-03

Banjo 90° 10mm, Carbon Steel

For -03 PTFE Smoothbore  
Hose



## BF-BS20-10-03

Banjo 20° Side Bend 10mm,  
Carbon Steel

For -03 PTFE Smoothbore  
Hose



## BF-BS90-10-03

Banjo 90° Side Bend 10mm,  
Carbon Steel

For -03 PTFE Smoothbore  
Hose



## BF-BD00-10-03

Banjo 10mm Double Barb,  
Carbon Steel

For -03 PTFE Smoothbore  
Hose



## BF-B00-12-03

Banjo 12mm Straight, Carbon  
Steel

For -03 PTFE Smoothbore  
Hose



# ***METRIC FITTINGS***



## **BF-FS-10100-CC**

Female Swivel Straight 10mm x  
1.00 Concave Seat,

Carbon Steel. For -03 PTFE  
Smoothbore Hose



## **BF-FS-10100-CV**

Female Swivel Straight 10mm x  
1.00 Convex Seat,

Carbon Steel. For -03 PTFE  
Smoothbore Hose



## **BF-FS45-10100-CV**

Female Swivel 45° 10mm x 1.0, Carbon  
Steel

For -03 PTFE Smoothbore Hose



## **BF-FS90-10100-CV**

Female Swivel 90° 10mm x 1.0, Car-  
bon Steel

For -03 PTFE Smoothbore Hose



## **BF-M-10100-CC**

Male Fixed Straight 10mm x 1.0  
Concave Seat,

Carbon Steel. For -03 PTFE  
Smoothbore Hose



## **BF-M-10100-CV**

Male Fixed Straight 10mm x 1.0  
Convex Seat,

Carbon Steel. For -03 PTFE  
Smoothbore Hose



## **BF-MBH-10100- CV**

Male Fixed Bulkhead ST 10mm x  
1.00 Convex Seat,

Carbon Steel. For -03 PTFE  
Smoothbore Hose



## **BF-MS-10100-CC**

Male Swivel Straight 10mm x 1.0  
Concave Seat,

Carbon Steel. For -03 PTFE  
Smoothbore Hose



## **BF-MS-10100-CV**

Male Swivel Straight 10mm x 1.0  
Convex Seat,

Carbon Steel. For -03 PTFE Smooth-  
bore Hose



## **BF-MS-10125-CC**

Male Swivel Straight 10mm x  
1.25 Concave Seat,

Carbon Steel. For -03 PTFE  
Smoothbore Hose

# IMPERIAL MALE THREAD



## BF-M-38240-CC

Male Fixed Straight 3/8-24 Concave Seat,

Carbon Steel. For -03 PTFE Smoothbore Hose

## BF-M-38240-CV

Male Fixed Straight 3/8-24 Convex Seat,

Carbon Steel. For -03 PTFE Smoothbore Hose



## BF-MS-38240-CC

Male Swivel Straight 3/8-24 Concave Seat,

Carbon Steel. For -03 PTFE Smoothbore Hose

## BF-MS-38240-CV

Male Swivel Straight 3/8-24 Convex Seat,

Carbon Steel. For -03 PTFE Smoothbore Hose



## BF-MS45-38240-CC

Male Swivel 45° 3/8-24 Concave Seat,  
Carbon Steel. For -03 PTFE Smoothbore Hose

## BF-MS45-38240-CV

Male Swivel 45° 3/8-24 Convex Seat,  
Carbon Steel. For -03 PTFE Smoothbore Hose

## BF-MS90-38240-CC

Male Fixed 90° 3/8-24 Concave Seat,  
Carbon Steel. For -03 PTFE Smoothbore Hose



## BF-MS90-38240-CV

Male Fixed 90° 3/8-24 Convex Seat,  
Carbon Steel. For -03 PTFE Smoothbore Hose

## BF-MS-71624-CC

Male Swivel Straight 7/16-24 Concave Seat,

Carbon Steel. For -03 PTFE Smoothbore Hose

## BF-MS-71624-CV

Male Swivel Straight 7/16-24 Convex Seat,

Carbon Steel. For -03 PTFE Smoothbore Hose



# IMPERIAL FEMALE THREAD



**BF-M-71620-CC**

7/16-20 Male ST Fixed Concave by -03 barb

For -03 PTFE Smoothbore Hose



**BF-MBH-38240-CV**

3/8-24 Male ST Bulkhead Convex by -03 barb

For -03 PTFE Smoothbore Hose



**BF-FS-38240-CC**

3/8-24 Female Straight Concave, Carbon Steel

For -03 PTFE Smoothbore Hose



**BF-FS-38240-CV**

3/8-24 Female Straight Convex, Carbon Steel

For -03 PTFE Smoothbore Hose



**BF-FT-38240-CV**

3/8-24, Female Tee Block Convex,

For -03 PTFE Smoothbore Hose



**BF-FS-71624-CC**

7/16-24 Female Straight Concave, Carbon Steel

For -03 PTFE Smoothbore Hose



**BF-FS-71624-CV**

7/16-24 Female Straight Convex, Carbon Steel

For -03 PTFE Smoothbore Hose

# BRAKE FITTINGS

All fittings include a crimp collar. Fittings work with all 0.40 wall stainless braided PTFE hose. Jacketed hose must be skived before insertion of fittings.



P/N	Description
BF-B00-08-03	8mm Straight Banjo
BF-B00-10-03b	10mm Straight Banjo, Medium
BF-B00-10-03c	10mm Straight Banjo, Long
BF-B00-11-03	11mm Straight Banjo, Medium
BF-B00-12-03	12mm Straight Banjo, Short
BF-B20-10-03	10mm 20° Regular Bend
BF-B45-10-03	10mm 45° Regular Bend
BF-B90-10-03	10mm 90° Regular Bend
BF-BD00-10-03	10mm Center, Double Barbed
BF-BS20-10-03	10mm 20° Side Bend
BF-BS90-10-03	10mm 90° Side Bend
BF-MBH-10100-CV	Male Bulkhead Convex, 10mm x 1.0 by -03 barb
BF-MS-10100-CC	10mm x 1.0, Straight Male Concave Swivel by -03 barb
BF-MS-10100-CV	10mm x 1.0, Straight Male Convex Swivel by -03 barb
BF-MS-10125-CC	10mm x 1.25, Straight Male Concave Swivel by -03 barb
BF-MS-10125-CV	10mm x 1.25, Straight Male Convex Swivel by -03 barb
BF-MS45-10100-CC	10mm x 1.0, 45° Male Concave Swivel by -03 barb
BF-MS90-10100-CC	10mm x 1.0, 90° Male Concave Swivel by -03 barb
BF-MS90-10100-CV	10mm x 1.0, 90° Male Convex Swivel by -03 barb
BF-FS-10100-CC	10mm x 1.0, Female Swivel Concave by -03 barb



P/N	Description
BF-FS-10100-CV	10mm x 1.0, Female Swivel Convex by -03 barb
BF-FS-10125-CC	10mm x 1.25, Female Swivel Concave by -03 barb
BF-FS-10125-CV	Female Swivel Convex, 10mm x 1.25 by -03 barb
BF-FS-12100-CC	Female Swivel Concave, 12mm x 1.0 by -03 barb
BF-FS-12100-CV	12mm x 1.0, Female Swivel Convex by -03 barb
BF-FS45-10100-CV	10mm x 1.0, 45° Female Swivel Convex by -03 barb
BF-FS90-10100-CV	10mm x 1.0, 90° Female Swivel Convex by -03 barb
BF-M-38240-CC	3/8-24 Male ST Fixed Concave by -03 barb
BF-M-38240-CV	3/8-24 Male ST Fixed Convex by -03 barb
BF-M-71620-CC	7/16-20 Male ST Fixed Concave by -03 barb
BF-MBH-38240-CV	3/8-24 Male ST Bulkhead Convex by -03 barb
BF-MS-38240-CC	3/8-24 Male ST Swivel Concave by -03 barb
BF-MS-38240-CV	3/8-24 Male ST Swivel Convex by -03 barb
BF-MS-71624-CC	7/16-24 Male ST Swivel Concave by -03 barb
BF-MS-71624-CV	7/16-24 Male ST Swivel Convex by -03 barb
BF-MS45-38240-CC	3/8-24 Male 45° Swivel Concave by -03 barb
BF-FS-38240-CC	3/8-24, Female Swivel Concave by -03 barb
BF-FS-38240-CV	3/8-24, Female Swivel Convex by -03 barb
BF-FS-71624-CC	7/16-24, Female Swivel Concave by -03 barb
BF-FS-71624-CV	7/16-24, Female Swivel Convex by -03 barb
BF-FT-38240-CV	3/8-24, Female Tee Block Convex



**PARAGON**  
**PERFORMANCE**



SINCE 1997

[WWW.PARAGONPERFORMANCE.COM](http://WWW.PARAGONPERFORMANCE.COM)

# BRAKE ADAPTERS

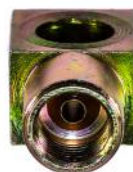
**DPS - Drill Point Seat/Concave**

**I.S. - Inverted Seat/Convex**



## Threaded Adapters

P/N	Description	
PP-BA-BAN	Yamaha Banshee Tee block	<b>DPS</b>
PP-BA-040	10mm x 1.0 Male by 10mm x 1.0 Female	<b>I.S.</b>
PP-BA-041	10mm x 1.0 Male by 10mm x 1.25 Female	<b>I.S.</b>
PP-BA-042	10mm x 1.25 Male by 10mm x 1.0 Female	<b>I.S.</b>
PP-BA-043	12mm x 1.0 Male by 10mm x 1.0 Female	<b>I.S.</b>
PP-BA-044	10mm x 1.0 Male by 12 mm x 1.0 Female	<b>I.S.</b>
PP-BA-045	3/8-24NF Male by 7/16-24NS Female	<b>I.S.</b>
PP-BA-046	7/16-24NS Male by 3/8-24NF Female	<b>I.S.</b>
PP-BA-047	7/16-20NS Male by 3/8-24NF Female	<b>I.S.</b>
PP-BA-048	1/8-27NPT Male by 3/8-24NF	<b>I.S.</b>
PP-BA-049	10mm x 1.0 Male by 3/8-24NF Female	<b>I.S.</b>
PP-BA-050	3/8-24NF Male by 10mm x 1.0 Female	<b>I.S.</b>
PP-BA-119	9/16-18 Female by 9/16-18 Female	<b>I.S.</b>
PP-BA-120	1/2-20NF Male by 3/8-24NF Female	<b>I.S.</b>
PP-BA-121	9/16-20NS Male by 3/8NF Female	<b>I.S.</b>
PP-BA-122	1/2-20NF Male by 7/16-24NS Female	<b>I.S.</b>
PP-BA-123	9/16-18NS Male by 7/16-24NS Female	<b>I.S.</b>
PP-BA-124	9/16-18NF Male by 3/8NF Female	<b>DPS</b>
PP-BA-125	10mm x 1.0 Male by 3/8-24NF Female	<b>I.S.</b>
PP-BA-127	7/16-24NS Male by 1/2-20NF Female	
PP-BA-131	7/16-20 UNF (-04 JIC) Male by 3/8-24 UNF Male	
PP-BA-144	7/16-20 UNF (-04 JIC) Male by 12mmx1.0 Male	
PP-BA-156	3/8-24 Male by 3/8-24 Female	<b>DPS</b>
PP-BA-187	10mm x 1.5 Male by 1/8-27NPT Female	





<b>P/N</b>	<b>Description</b>	
PP-BA-246	1/8-27 Male NPT by 12mm x 1.0 Female	<b>DPS</b>
PP-BA-247	3/8-24NF Male by 1/8-27NPT Female	<b>DPS</b>
PP-BA-248	1/2-20NF Male by 1/8-27NPT	<b>DPS</b>
PP-BA-260	3/8-24nf Male by 1/2-20NF Female	<b>I.S.</b>
PP-BA-261	3/8-24NF Male by 9/16-18NF Female	<b>I.S.</b>
PP-BA-262	9/16-18NF Male by 3/8-24NF Female	<b>DPS</b>
PP-BA-2927	-04 Male JIC by 3/8-24 SAE Male	<b>I.S.</b>
PP-BA-2928	-03 Male JIC by 10mm x 1.0 Male	<b>I.S.</b>
PP-BA-062	Banjo Adapter-11mm banjo by 7/16-24 UNS female	<b>I.S.</b>
PP-BA-090A	3 way tube tee - 3/8-24	<b>DPS</b>
PP-BA-091A	3 Way Tube tee - M10x1 - 8mm mount hole	
PP-BA-092	3 Way tube tee - 7/16-24NF - 3/8 mounting hole	<b>I.S.</b>
PP-BA-094	3 Way tube tee - 7/16-20NF - 3/8 mounting hole	<b>DPS</b>
PP-BA-264	3/8-24NF tee	<b>I.S. x 3</b>
PP-BA-360	Male Fitting Tee - 03 JIC x 3	
PP-BA-361	Male Fitting Tee - 04 JIC x 3	
PP-BA-56A	Tee - 3 Way Tube Tee - 3/8-24 UNF - 5/16 mount hole	<b>I.S.</b>
PP-BA-7812	3 Way Tee with Bracket - 3/8-24NF	
PP-BA-145	Male - Male adapter   7/16-20 UNF JIC stud   M10 x 1.0	
PP-BA-383	12mm x 1.0 Male by 3/8-24 UNF Female	<b>I.S.</b>
PP-BA-502	Fitting Plug - M10 x 1.0	<b>I.S.</b>
PP-BA-503	Fitting Plug - 3/8-24	<b>I.S.</b>
PP-BA-504	Fitting Plug - 7/16-24	<b>I.S.</b>
PP-BA-505	Fitting Plug - M12 x 1.0	<b>I.S.</b>
PP-BA-506	Fitting Plug - M10 x 1.0	<b>DPS</b>
PP-BA-507	Fitting Plug - M12 x 1.0	<b>DPS</b>
PP-BA-9180	Male Tube Nut - 3/16" Tube - 12mm x 1.0 - thread length 15mm	
PP-BA-19	Plug, 3/8-24NF	
PP-BA-26	Plug, 7/16-24NS	
PP-BA-2929	-03 Male JIC by 7/16-24 Male	<b>I.S.</b>
PP-BA-2930	-04 Male JIC by 7/16-24 Male	<b>I.S.</b>
PP-BA-2966	-03 Male JIC by 10mm x 1.5 male	<b>I.S.</b>
PP-BA-2967	-03 Male JIC by 10mm x 1.5 Male	<b>DPS</b>

## Rubber Grommets



PP-BA-210



PP-BA-211



PP-BA-212



PP-BA-213



PP-BA-215



PP-BA-218



PP-BA-203

# PTFE HOSE

## Smooth Bore PTFE Hose

### Non- Conductive

.030 wall 304 Stainless Steel Braided PTFE Hose.

Meets or exceeds SAE 100R14 specifications

-65°F to 450°F (-54°C to 232°C) Continuous Service



P/N	Hose Size	Average ID	OD	OP	PSI Burst	Bend Radius	Max Length
N000-03	-03	0.125	0.250	3,000	12,000	2	300
N000-04	-04	0.187	0.312	3,000	12,000	2	400
N000-05	-05	0.250	0.375	3,000	12,000	3	300
N000-06	-06	0.312	0.445	2,500	10,000	4	300
N000-07	-07	0.375	0.503	2,500	9,000	4.5	300
N000-08	-08	0.405	0.549	2,000	8,000	5.2	200
N000-10	-10	0.500	0.648	1,500	6,000	6.5	180
N000-12	-12	0.625	0.778	1,200	4,800	7.7	125
N000-16	-16	0.875	1.030	1,000	4,000	9	50



# Silicone Jacketed Hose

Inner tube non-conductive, 400° Temp Max for Silicone

Provides Insulation Properties and Greatly Improves Hoop Strength



P/N	Description
N420-04	-04 (0.187 ID) PTFE stainless braided hose with Silicone Jacket, Blue
N450-04	-04 (0.187ID) PTFE stainless braided hose with Silicone Jacket, Red
N420-06	-06 (0.312 ID) PTFE stainless braided hose with Silicone Jacket, Blue
N450-06	-06 (0.312 ID) PTFE stainless braided hose with Silicone Jacket, Red
N470-06	-06 (0.312 ID) PTFE stainless braided hose with Silicone Jacket, White
N420-08	-08 (0.405 ID) PTFE stainless braided hose with Silicone Jacket, Blue
N450-08	-08 (0.405 ID) PTFE stainless braided hose with Silicone Jacket, Red
N420-10	-10 (0.500 ID) PTFE stainless braided hose with Silicone Jacket, Blue
N450-10	-10 (0.500 ID) PTFE stainless braided hose with Silicone Jacket, Red
N450-12	-12 (0.625ID) PTFE stainless braided hose with Silicone Jacket, Red

# PVC Jacketed PTFE Hose

Clear & Colored PVC Jackets offer extra protection against dirt and debris.

They also offer a way to customize your project or use different colors to associate chemicals/fluids.

PVC Jacket is also ideal for situations where an aesthetic appearance is important.



P/N	Description
N600-03	-03 (0.125 ID) Clear PVC over PTFE stainless braided hose
N600-04	-04 (0.187 ID) Clear PVC over PTFE stainless braided hose
N600-05	-05 (0.250 ID) Clear PVC over PTFE stainless braided hose
N600-06	-06 (0.312 ID) Clear PVC over PTFE stainless braided hose
N600-08	-08 (0.405 ID) Clear PVC over PTFE stainless braided hose
N620-03	-03 (0.125 ID) Blue PVC over PTFE stainless braided hose
N630-03	-03 (0.125 ID) Green PVC over PTFE stainless braided hose
N650-03	-03 (0.125 ID) Red PVC over PTFE stainless braided hose
N660-03	-03 (0.125 ID) Smoke PVC over PTFE stainless braided hose
N660-04	-04 (0.187 ID) Clear PVC over PTFE stainless braided hose



# PTFE HOSE cont.

## Hytrel Jacket Black

### Non- Conductive

Inner tube non-conductive, Provides Abrasion

Protection. Also improves Hoop Strength. Printing is an extra charge.



P/N	Description
N300-03	-03 (0.125 ID) PTFE stainless braided hose with Black Hytrel Jacket
N300-04	-04 (0.187 ID) PTFE stainless braided hose with Black Hytrel Jacket
N300-05	-05 (0.250 ID) PTFE stainless braided hose with Black Hytrel Jacket
N300-06	-06 (0.312 ID) PTFE stainless braided hose with Black Hytrel Jacket

## Santoprene Jacket

Provides Abrasion Protection and improves Hoop Strength. 225°F to 275°F



P/N	Description
C560-03	-03 (0.125 ID) PTFE Conductive stainless braided hose with Black Jacket
C560-04	-04 (0.187 ID) PTFE Conductive stainless braided hose with Black Jacket
N560-06	-05 (0.250 ID) PTFE Non- Conductive stainless braided hose with Black Jacket



# PTFE HOSE cont.

## Smooth Bore PTFE Hose

### Conductive

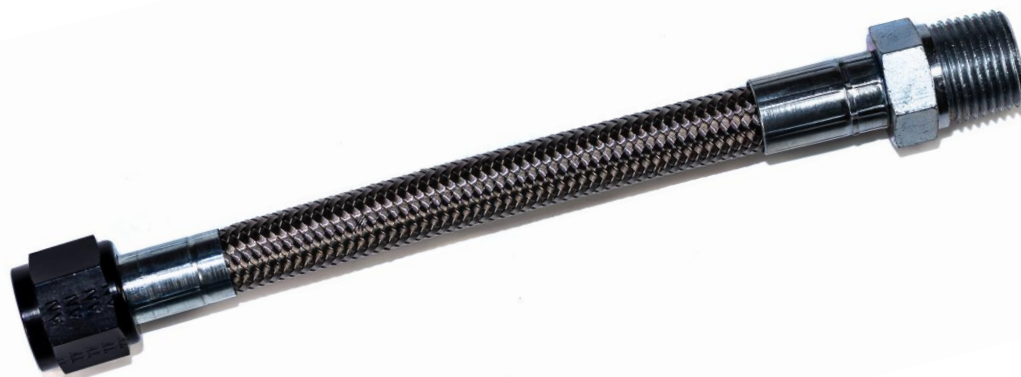
.030 wall 304 Stainless Steel Braided PTFE Hose.

Meets or exceeds SAE 100R14 specifications

-65°F to 450°F (-54°C to 232°C) Continuous Service



P/N	Hose Size	Average		PSI		Bend Radius	Max Length
		ID	OD	OP	Burst		
N000-03	-03	0.125	0.250	3,000	12,000	2	300
N000-04	-04	0.187	0.312	3,000	12,000	2	400
N000-05	-05	0.250	0.375	3,000	12,000	3	300
N000-06	-06	0.312	0.445	2,500	10,000	4	300
N000-07	-07	0.375	0.503	2,500	9,000	4.5	300
N000-08	-08	0.405	0.549	2,000	8,000	5.2	200
N000-10	-10	0.500	0.648	1,500	6,000	6.5	180
N000-12	-12	0.625	0.778	1,200	4,800	7.7	125
N000-16	-16	0.875	1.030	1,000	4,000	9	50



Place orders to [orderdesk@paragonperformance.com](mailto:orderdesk@paragonperformance.com)

# ***SILICONE VACUUM HOSE***

**Full vacuum through the temperature  
range: -65°F to 300°F**

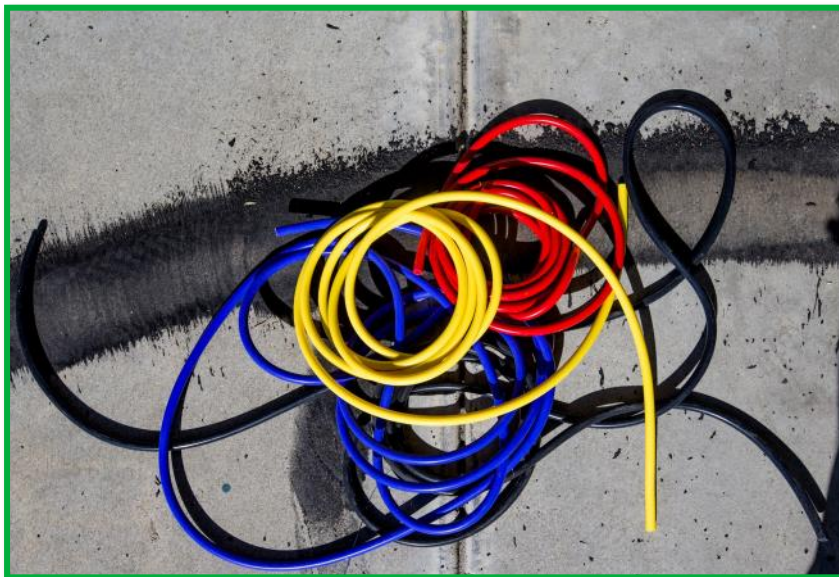
**Available Colors: Blue (BL), Red(RD), Yellow(Y),  
Black (BK), and Green(G)**

**Format to order: SVH - color choice - size**

**Size 050 only available in black & blue**



Size	Description
012	1/8" - 3mm ID , 8mm OD
016	5/32" - 4mm ID , 8.5mm OD
018	3/16" - 5mm ID, 9mm OD
025	1/4" - 6mm ID , 10mm OD
031	5/16" - 8mm ID
038	3/8" - 10mm ID
050	1/2" - 12mm ID



# ***FIRE SLEEVE***

**Fire sleeve protects your PTFE assemblies, hydraulic hoses, cables and lines from heat and abrasion in extreme work environments**

**silicone coated fiberglass sleeve is rated for continuous exposure at 500°F and is capable of withstanding short-term exposure up to 2,200°F**

**Available in Black (BK)**



P/N	Description
PP-FS-03BK	1/4" I.D Aerospace Grade
PP-FS-04BK	3/8" I.D. Aerospace Grade
PP-FS-06BK	1/2" I.D. Aerospace Grade
PP-FS-08BK	5/8" I.D. Aerospace Grade
PP-FS-10BK	3/4" I.D. Aerospace Grade
PP-FS-12BK	1" I.D. Aerospace Grade





# ***SILICONE HEATER HOSE***

**Full vacuum through the temperature  
range: -65°F to 300°F**

**Pressure rating is 200psi**

**Available Colors: **Blue (BL)** and **Black (BK)****



P/N	Description
PHH-018-BL	1/8" Silicone Heater Hose
PHH-025-BK	1/4" Silicone Heater Hose
PHH-025-BL	1/4" Silicone Heater Hose
PHH-031-BL	5/16" Silicone Heater Hose
PHH-038-BK	3/8" Silicone Heater Hose
PHH-050-170-BL	1/2" Silicone Heater Hose
PHH-050-BK	1/2" Silicone Heater Hose
PHH-050-BL	1/2" Silicone Heater Hose
PHH-062-BK	5/8" Silicone Heater Hose
PHH-062-BL	5/8" Silicone Heater Hose



# AUDI PERFORMANCE



*Audi B5S4 running our turbo oil and wastegate lines.*

**Audi Turbo waste gate Supply and Actuator Kit. For the Audi B5S4 chassis, 8 lines total. Lines labeled for correct placement.**

## **Kit Includes:**

- 4- 8mm washers, 2 - "Y" Adapters, 2 - Union Adapters
- Two rubber lines that fit over the barb side to "Y" fitting
- Two PTFE oil lines; 8mm banjo by Female JIC
- Two PTFE actuator lines with two silicone lines to connect, to the barbed vacuum ports on the waste gate.

**Part # - TWG-KITC-A&S**











*Paragon Performance LLC*  
*800.270.3330*  
*info@paragonperformance.com*